

WARMWATER GAME FISH

SIZE AND CREEL REGULATIONS

Species	Minimum Size Limit	Daily Creel Limit
Crappie*	None	None
Largemouth bass*	14 inches, except 2 fish in the creel may be less than 14 inches	5
Smallmouth and Spotted Bass*	12 inches, except 2 fish in the creel may be less than 12 inches	5
Striped Bass and Bodie Bass*	18 inches	3
White bass	None	25
Walleye*	None	8
Muskellunge and Tiger musky	30 inches	2
Sauger	15 inches	8
Kokanee salmon	None	7
Spotted sea trout	12 inches	10
Flounder	13 inches	None
Red drum	18 inches (maximum size 27 inches)	1
American and Hickory shad*	None	10
All Other Warmwater Game Fishes*	None	None

* Exceptions:

Sunfish

- In the entire Lumber River from the Camp MacKall bridge (SR 1225 at the point where Richmond, Moore, Scotland and Hoke cos. join) to the South Carolina state line and in all public fishing waters east of I-95, except Tar River Reservoir (Nash Co.), the daily creel limit for sunfish is 30 fish in aggregate, no more than 12 of which may be redbreast sunfish.

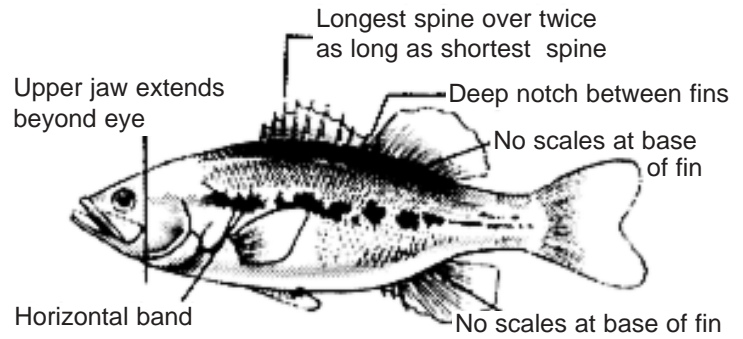
Crappie (black and white)

- In the following waters the minimum size limit is 8 inches and the daily creel limit is 20 fish:
 - High Rock Lake
 - Falls Lake (Stanly and Montgomery cos.),
 - Tuckertown Reservoir
 - Lake Ramseur
 - Lake Tillery,
 - Badin Lake
 - Lake Hyco
 - Cane Creek Lake
- The following waters and all their tributaries: Roanoke Sound, Croatan Sound, Currituck Sound, Albemarle Sound, Alligator River, Scuppernong River, Chowan River, Cashie River, Roanoke River downstream of U.S. 258 bridge, Lake Mattamuskeet, Lake Phelps, Pungo Lake, Alligator Lake and New Lake.
- In and west of Madison, Buncombe and Rutherford counties and in Lake James, the daily creel limit is 20 fish.

Black Bass (largemouth, smallmouth and spotted bass)**

- Only 5 black bass in aggregate may be retained in the daily creel.
- In Calderwood Reservoir there is no minimum size limit on black bass (reciprocal agreement with Tennessee).
- The minimum size limit for bass is 14 inches, with no exception in the following waters:
 - Lake Luke Marion (Moore County)
 - Reedy Creek Park Lakes (Mecklenburg County)
 - High Rock Lake downstream of I-85
 - Tuckertown Reservoir
 - Badin Lake
 - Falls Lake (Stanly and Montgomery cos.)
 - Lake Tillery
 - Lake Rim (Cumberland Co.)
 - New River and its tributaries (Onslow Co.)
 - Blewett Falls Lake.
- The following waters and all their tributaries: Roanoke Sound, Croatan Sound, Currituck Sound, Albemarle Sound, Alligator River, Scuppernong River, Chowan River, Cashie River, Roanoke River downstream of U.S. 258 bridge, Lake Mattamuskeet, Pungo Lake, Alligator Lake and New Lake.
- In and west of Madison, Buncombe, Henderson and Polk counties, and in all designated public mountain trout waters, the minimum size limit for black bass is 12 inches, except two bass less than 12 inches in length may be retained in the daily creel.
- In Lake Thom-A-Lex (Davidson Co.), Cane Creek Lake (Union

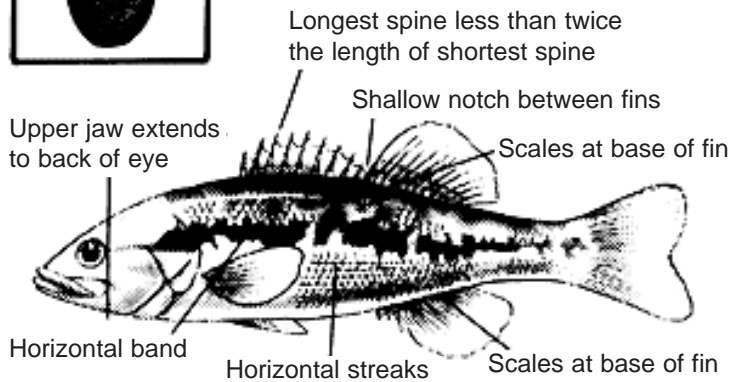
Bass Identification Chart



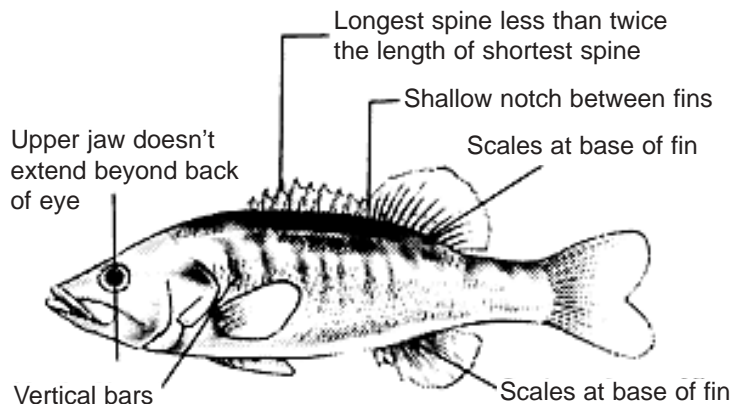
LARGEMOUTH BASS...Found Statewide



One patch of teeth on tongue



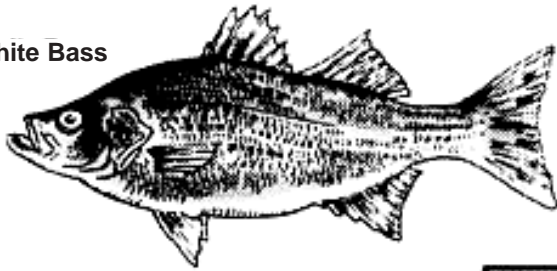
SPOTTED BASS...Found in the Mountains, Foothills, and Little River in Harnett County



SMALLMOUTH BASS...Found in the Mountains, and Foothills

Morone Identification Chart

White Bass



Stripes often faint

One patch of teeth on tongue

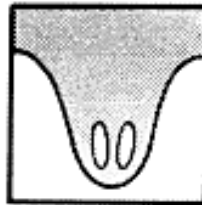


Striped Bass



Stripes distinct and usually continuous

Two patches of teeth on tongue

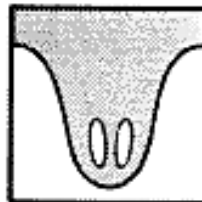


Bodie Bass (striped bass hybrid)



Stripes distinct and usually broken

Two patches of teeth on tongue



- Co.) and Sutton Lake (New Hanover Co.), the minimum size limit for bass is 18 inches.
- In B. Everett Jordan Reservoir, Falls of the Neuse Reservoir **east of SR 1004** and Kernersville Lake, the minimum size limit for black bass is 16 inches.
- In W. Kerr Scott Reservoir there is no minimum size limit for spotted bass.
- In Lake Lure the minimum size limit for largemouth bass is 16 inches and the minimum size limit for smallmouth bass is 14 inches, with no exceptions.
- In Lake Phelps the minimum size limit for black bass is 14 inches and no fish between 16 and 20 inches may be possessed.**
- In Shearon Harris Reservoir no black bass between 16 and 20 inches may be possessed.**
- Small city/county owned lakes under management contract with the Commission may have different black bass regulations which are posted at the lakes.
- ** See identification chart.

Shad

- Daily creel limit applies to American and hickory shad in aggregate.

Striped Bass and Bodie Bass**

- Daily creel limit applies to striped bass and Bodie bass in aggregate.
- In Dan River between Bannister River and the Brantly Steam Plant Dam, and in John H. Kerr, Gaston and Roanoke Rapids reservoirs, and Lake Norman, the daily creel limit on striped bass and Bodie bass is 4 in the aggregate and the minimum size limit is 20 inches.
- In all impounded waters and their tributaries, except those waters listed above, the daily creel limit on striped bass and Bodie bass is 8 in the aggregate and 2 fish less than 16 inches may be retained in the daily creel.
- In the following waters the minimum size limit on striped bass and Bodie bass is 18 inches, the daily creel limit is 3 fish and from April 1 through May 31, no fish between 22 and 27 inches may be retained:
 - Tar-Pamlico River and tributaries upstream of the Grimesland bridge (SR 1565 Pitt Co.)
 - Neuse River and tributaries upstream of the NC 55 bridge in Lenoir Co.
- The minimum size limit for striped bass and Bodie bass is 18 inches and the daily creel limit is 3 fish in the following waters:
 - Pee Dee River below Blewett Falls Dam
 - Inland waters of the Cape Fear River below Buck Horn Dam
 - Inland waters of the Pungo River
 - Lake Mattamuskeet.
- In the inland and joint fishing waters of the Roanoke River Striped Bass Management Area, which includes the Roanoke, Cashie, Middle and Eastmost rivers and their tributaries, the seasons, minimum size and daily creel limits for striped bass and their hybrids are as follows:**
 - The season extends from March 1 through April 15 in that portion of the management area from the U.S. 258 bridge at Scotland Neck downstream to the mouth of Albemarle Sound and March 15 through April 30 in that portion of the management area from the Roanoke Rapids dam downstream to the U.S. 258 bridge at Scotland Neck.
 - The minimum size limit for striped bass and Bodie bass is 18 inches. **No fish between 22 and 27 inches may be retained in the daily creel and only 1 fish larger than 27 inches may be included in the daily limit.**
 - The daily creel limit for striped bass and Bodies Bass is 2 fish in aggregate.
- In the inland waters of the Albemarle Sound Striped Bass Management Area, which includes Roanoke Sound, Croatan Sound, Albemarle Sound, Currituck Sound, Chowan River, Alligator River, Scuppernong River and their tributaries (excluding the Roanoke River and its tributaries) striped bass fishing season, seasons, size limits and creel limits shall be the same as those established by the Marine Fisheries Commission for striped bass in adjacent joint or coastal fishing waters.

** See identification chart.

Walleye

- The minimum size limit on walleye in Lake James and its tributaries is 15 inches and in Linville River upstream from NC 126 bridge the daily creel limit is 4 fish.